

# Unit 6 Lesson 3C CW/HW

$$\cos \frac{\alpha}{2} =$$

$$\tan \frac{\alpha}{2} =$$

$$\sin \frac{\alpha}{2} =$$

=

=

Complete w/o calculator!

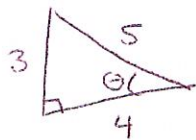
1. Find each value using a half angle formula

A.  $\cos 22.5^\circ$

B.  $\tan 75^\circ$

C.  $\tan \frac{3\pi}{8}$

2. Given



find the exact value

A.  $\cos \frac{\theta}{2}$

B.  $\tan \frac{\theta}{2}$

C.  $\sin \frac{\theta}{2}$

3. Given  $\tan \alpha = \frac{8}{15}$ , quad III find

A.  $\sin \frac{\alpha}{2}$

B.  $\cos \frac{\alpha}{2}$

C.  $\tan \frac{\alpha}{2}$

4. Start studying!

Your quiz on May 10<sup>th</sup> will cover

Lesson 1 - 3. It will be a mix of application and verification. You'll need to know your unit circle! (No calculators!) You'll also need

to know the formulas. There will be no surprises, so review the materials (notes, CW, HW, etc) to see possible types of questions. You'll have the full block, but you may not need it. Please bring other HW.